

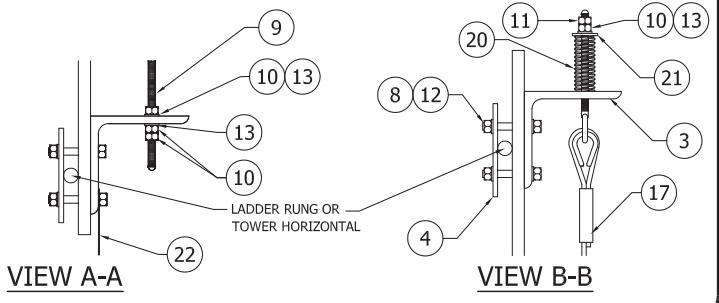
- *NOTE:**
- AIRCRAFT CABLE TO BE TENSIONED TO APPROXIMATELY 500 POUNDS. DO NOT OVERTIGHTEN THE CABLE AT THE BOTTOM CONNECTION.
 - INSTALL CABLE GUIDES AT APPROXIMATELY 25' SPACING.
 - INSTALL GUY CLIPS AT 2 3/8" (60mm) SPACING. APPLY TORQUE OF 45 ft-lbs (60 Nm) EACH.

BILL OF MATERIAL KIT #SCL010R-1, 2, 3, 4, 5, 6, 7, 8, 9, 10

ITEM	QTY.	PART NO.	DESCRIPTION	Wt./lb
1	2	CL010R	BAR 2-1/2"x5/8" (64x16mm)	18#
3	2	CL010C	L 5"x3 1/2"x1/2" (L 127x89x13mm)	4#
4	4	CL010D	BAR 2"x1/4" (51x6mm)	3#
6	5	110007	1/2" x 2-3/4" A325 BOLT ASSY	1#
8	5	111174	1/2" x 3-1/4" A325 BOLT ASSY	1#
9	1	160414	1/2" x 9" RH JAW	1#
10	4	110143	1/2" (13 UNC) HEX NUT	1#
11	1	110581	1/2" LOCK NUT PIN TYPE A325	1#
12	8	110203	1/2" (SPRING) LOCK WASHER	1#
13	5	110202	1/2" HARDENED FLAT WASHER	1#
14	1	140170	3/8" GUY EAR CLAMP	1#
15	1	140073	3/8" STANDARD GUY THIMBLE	#
16	2	140003	3/8" U-BOLT GUY CLIP	1#
17	1	SEE BELOW	3/8" AIRCRAFT CABLE ASSY	1#
18	SEE BELOW	111115	3/8" U-BOLT @ 1 1/2" c/c	1#
19	SEE BELOW	160427	RAM CABLE L-TYPE CABLE GUIDE	
20	1	160601	Die Spring 1" Hole Med. H.Duty	1#
21	1	110205	5/8" HARDENED FLAT WASHER	1#
22	1	MS005A	RAM Name PL 76 x 102mm	1#

3/8" GALVANIZED AIRCRAFT CABLE ASSEMBLIES

KIT #	AIRCRAFT CABLE ASSY	TOWER HEIGHT	# OF "L" SHAPE CABLE GUIDES	# OF "111115" 3/8" U-BOLTS
SCL010R	160603	10'	0	0
SCL010R-1	160604	25'	1	1
SCL010R-2	160598	50'	1	1
SCL010R-3	160600	100'	3	3
SCL010R-4	160605	150'	5	5
SCL010R-5	160606	200'	7	7
SCL010R-6	160607	250'	9	9
SCL010R-7	160608	300'	11	11
SCL010R-8	160609	350'	13	13
SCL010R-9	160610	400'	15	15
SCL010R-10	160611	500'	19	19
SCL010R-A	160612	20'	0	0
SCL010R-B	160597	30'	1	1
SCL010R-C	160613	40'	1	1
SCL010R-D	160614	60'	2	2
SCL010R-E	160615	70'	2	2
SCL010R-F	160599	80'	3	3
SCL010R-G	160616	90'	3	3



TURRIS ENGINEERING
PROCUREMENT PROJECT MGMT

995 Westport Crescent
 Mississauga, Ontario, L5T 1E8, Canada
 Tel: +1 905 461 9699 Fax: +1 905 461 0967
 www.turriscorp.com

REV.	DESCRIPTION	DWN.	CHK.	APP.

DWG REFERENCE

PROJECT STANDARD-CL

CUSTOMER

SITE NAME

TITLE

**SAFETY CLIMB
RAM CABLES SYSTEMS ON LADDER**

DATE JUNE 13 2007	DWG. BY: J.G.	PROJECT NO. STANDARD-CL	REV. 0
ENG'D APPD: J.W.	CHK'D BY: N.R.	DWG. NO. CL010R-E01	